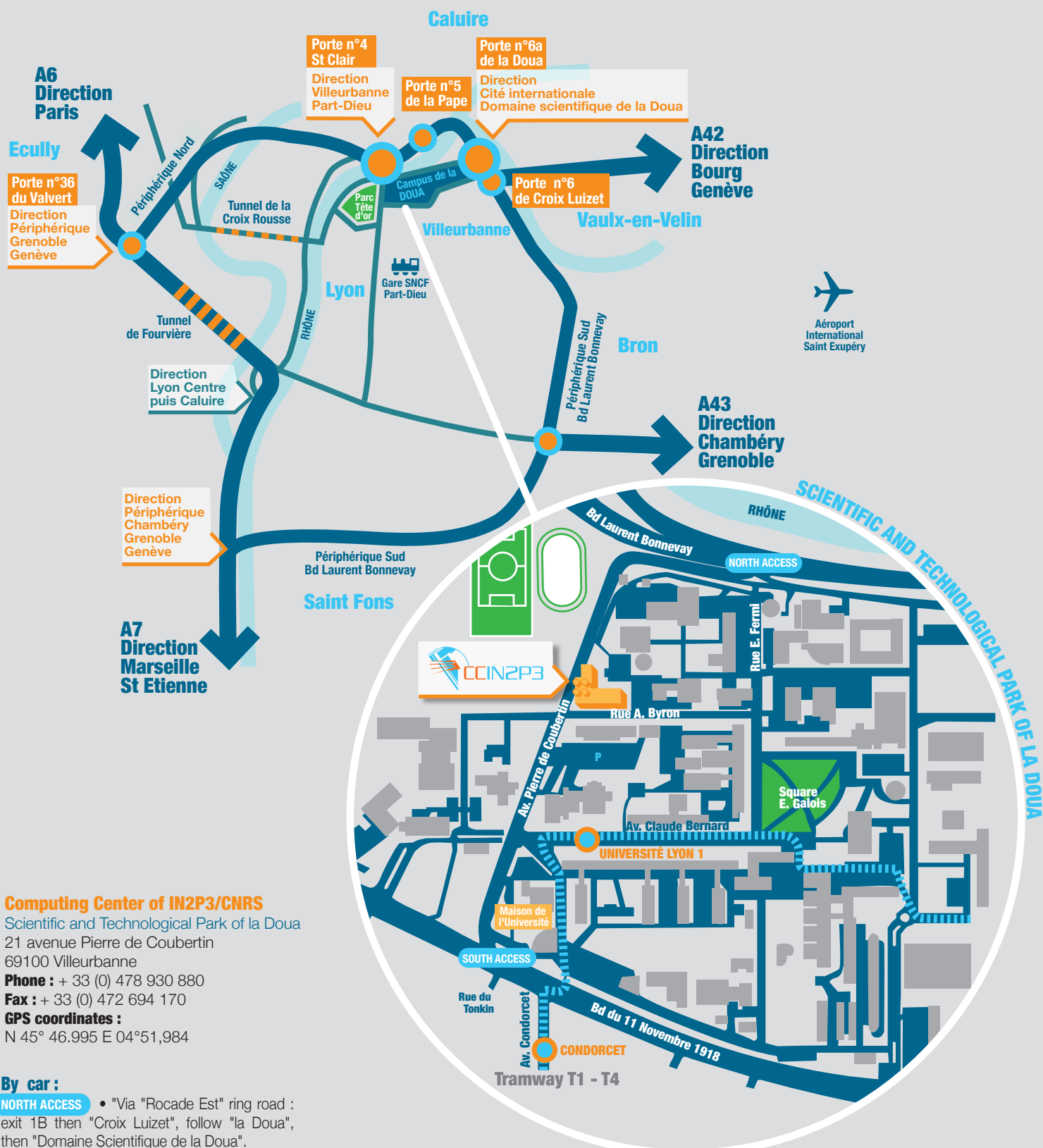


ACCESS TO THE IN2P3 COMPUTING CENTER



Computing Center of IN2P3/CNRS

Scientific and Technological Park of la Doua
21 avenue Pierre de Coubertin
69100 Villeurbanne

Phone : + 33 (0) 478 930 880

Fax : + 33 (0) 472 694 170

GPS coordinates :

N 45° 46.995 E 04°51,984

By car :

NORTH ACCESS • "Via "Rocade Est" ring road : exit 1B then "Croix Luizet", follow "la Doua", then "Domaine Scientifique de la Doua".

• Via the Boulevard Laurent BONNEVAY : exit 6 "Porte de Croix Luizet", then follow direction "Campus de la Doua"

SOUTH ACCESS • *You can also enter the campus by the 27-29 Boulevard du 11 Novembre 1918, then continue straight on in Avenue Pierre de Coubertin until the CC-IN2P3 (on your right).

By plane : Lyon Saint Exupéry airport is connected to Lyon by the RhôneExpress tram which arrives at La Part Dieu railway station. Then you can take the tramway (lines T1 or T4 to "IUT Feyssine") to "Université Lyon 1" station.

By train :

• From Part-Dieu station (recommended) : Take the tramway (line T1 for direction "IUT Feyssine") as far as "Université Lyon1" tram stop.

• From Perrache station : Take the metro line A for direction "Vaulx-en-Valin la Soie" to the "Charpennes" station. Then go to the surface to take the tramway (lines T1 or T4 for direction "IUT Feyssine") as far as "Université Lyon1" tram stop.

The Lyon Part-Dieu railway station is 2h away from Paris, 1h50 from Geneva and 1h40 from Marseille.

By metro and tramway : by metro and tramway : take the metro (line A for direction "Vaulx-en-Valin la Soie", or line B for direction "Charpennes") to the "Charpennes" station. There, take the tramway T1 or T4 for direction "IUT-Feyssine" as far as the "Université Lyon1" stop.

