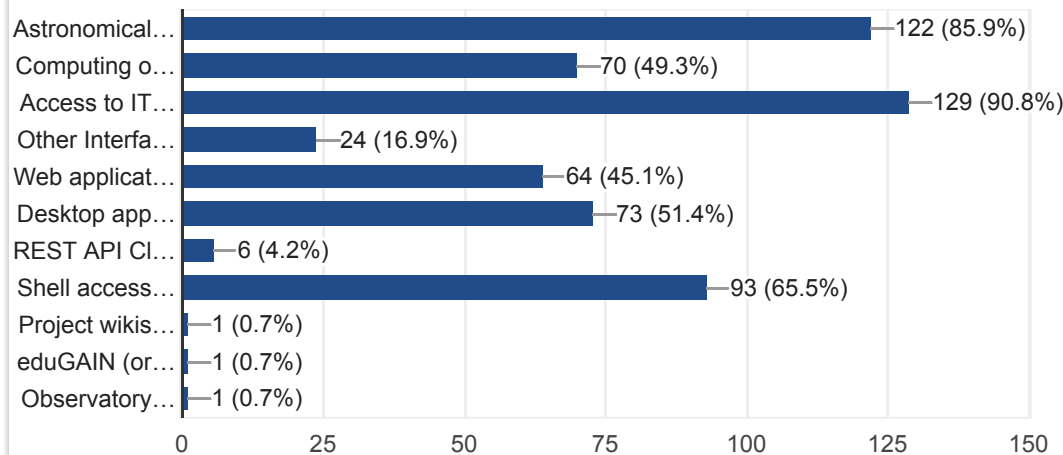


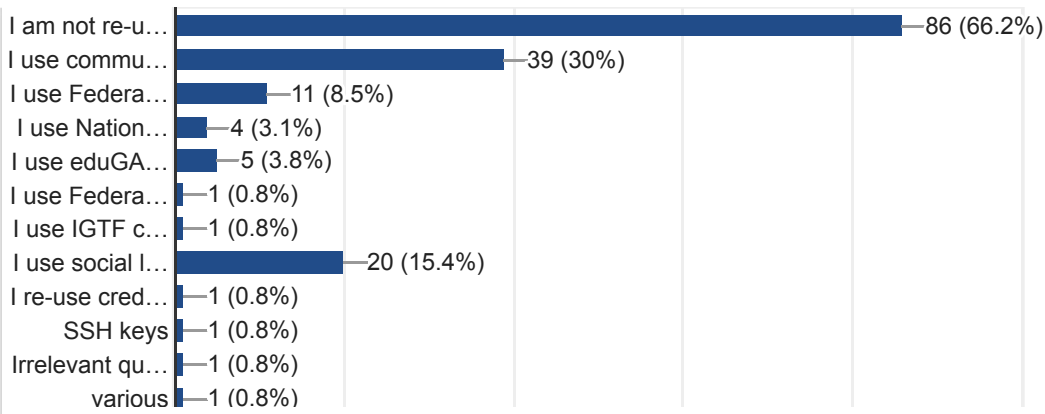
### Which services that require authentication are you using in your daily research activities and what interface do you use to access those services?

142 responses



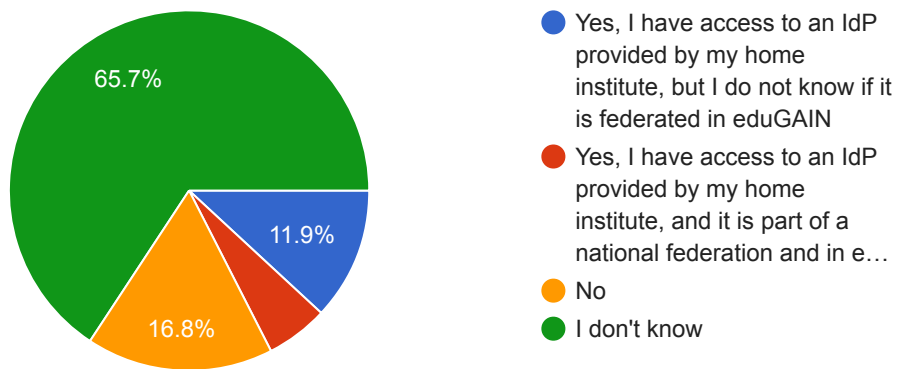
### Are you using the same authentication credentials to access different services offered by your institution or to access services offered by different providers ?

130 responses



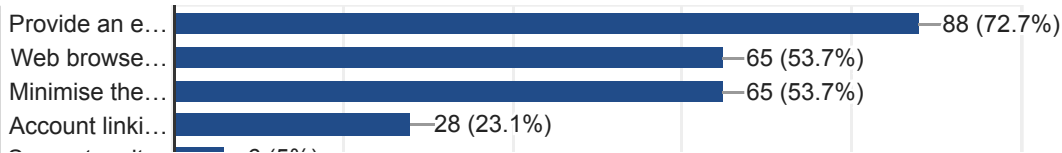
### Is your institute offering a federated authentication system?

143 responses

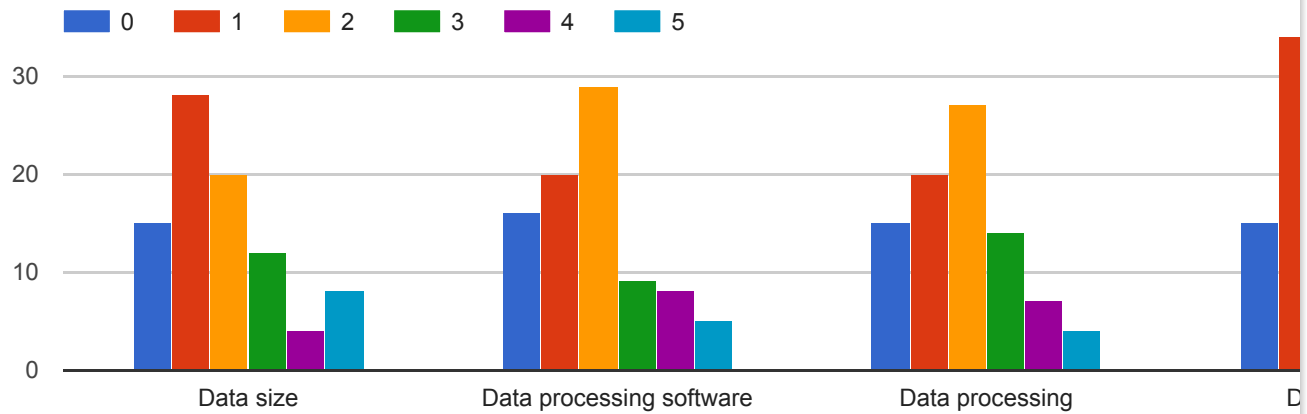


### What are the requirements for the authentication technologies to be used in your research activities?

121 responses



If you are an SKA precursor user, rank the difference with respect to other radio facilities that you felt as a difficulty (1= most difficult to face, 5=easy, 0=not exploited)



In your opinion, what might have improved your experience with SKA precursors?

48 responses

example text

The projected baselines and frequencies. I have no knowledge of what will be offered by SKA. There are many talks about SKA, however, there are no concrete decisions on the concrete science that SKA will deliver.

Less RFI. More resources to develop archive (and CASA pipeline sooner).

Better interaction between HW/SW developers and final user

Data sensitivity, automated calibration and imaging pipelines